

HOW TO CREATE THE
SOPHIE-Φ

The Sophie-I smoky eye technique allows you to not only express your individuality, but discover new depth and definition in your eyes.

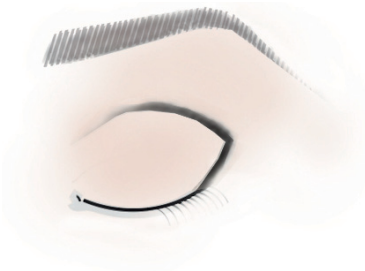
Created using the black Sophie Medium Pencil, the technique is inspired by The Sophie Lancaster Foundation, the charity Illamasqua supports, and £3 from every Sophie Pencil purchased is donated to the foundation.



STEP ONE

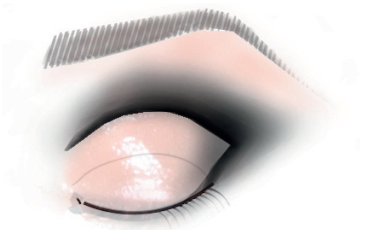
Sketch along the upper socket line with the creamy black Medium Pencil in Sophie. Then buff with an Illamasqua Eye Shadow Brush to create a soft, diffused line.

You can even wear this step on its own, to create a striking look in a hurry with just one product.



STEP TWO

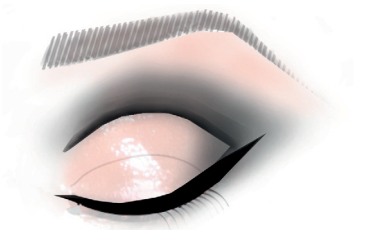
Take a pale neutral Powder Eye Shadow (we recommend Stealth) and gently press it to the centre of the eye lid, and underneath the brow bone for subtle highlight.



STEP THREE

With a charcoal black Powder Eye Shadow (try Machine) build over the previous black pencil line, working outwards and upwards.

Then take a Illamasqua Blending Brush and blend the two Powder Eye Shadows together, ensuring there are no sharp lines.



STEP FOUR

Mix Sealing Gel with your black Powder Eye Shadow to create a colour-intense, water-resistant paste. Taking a sharp Angled Eye Liner Brush apply the paste in a fine line along the upper lash line as a liquid eye liner.

Artists' Tip: You can also use this to redefine the original Sophie Pencil line along the socket for some serious drama.



STEP FIVE

Finish the look with a line of Sophie Pencil along the lower lash line, a coating of midnight black Mascara in Raven and your favourite Illamasqua False Eye Lashes.

